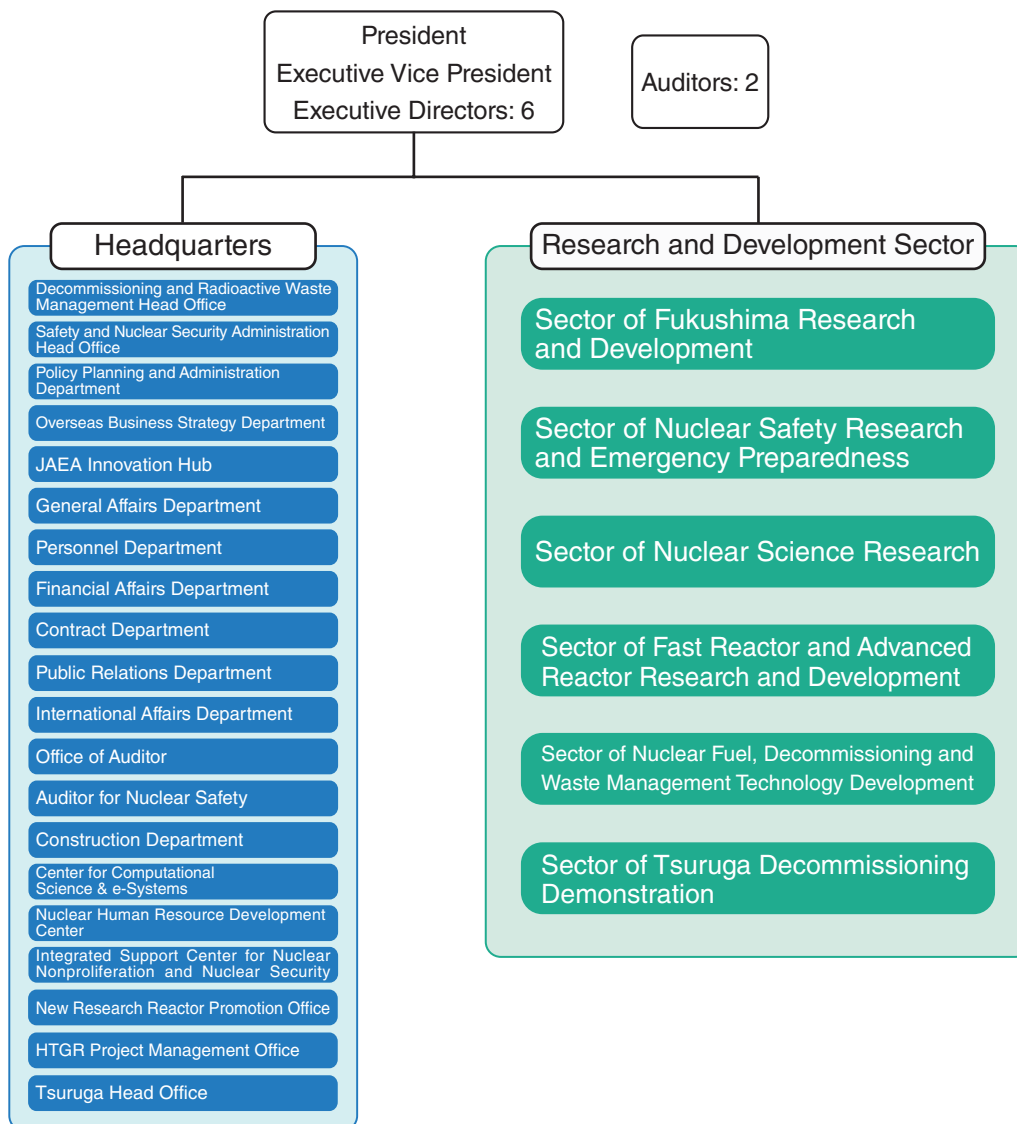


About This Publication and the JAEA Organizational Outline

This publication introduces the latest research and development (R&D) conducted by the Japan Atomic Energy Agency (JAEA) in various fields of. Each chapter presents the activities of a single sector. The R&D sectors perform their activities through R&D centers or institutes, which are based in one to several locations. These centers and institutes are located throughout Japan, as highlighted in the map below. The following introduction outlines the research undertaken within each sector.

JAEA -Organizational Outline-



As of December, 2023

R&D Institutes/Centers of JAEA

Horonobe Underground Research Center
R&D of Geological Disposal Technology for HLW



Aomori Research and Development Center
Support for Nuclear Fuel Cycle
Business Decommissioning of
Nuclear Ship

Fukushima Area

R&D for Response to the accident at the TEPCO's Fukushima Daiichi Nuclear Power Station

Collaborative Laboratories for
Advanced Decommissioning Science



Naraha Center for Remote Control
Technology Development



Okuma Analysis and
Research Center



Ningyo-toge Environmental Engineering Center

Decommissioning of uranium
enrichment plants and
environmental remediation
activities at Ningyo-toge mine



Harima SR Radioisotope Laboratory

Synchrotron radiation sciences



©RIKEN/JASRI

Tokyo-Kashiwa Area
Computational Science &
e-Systems Research

Tono Geoscience Center
Research on geosphere stability
as bases for R&D of Geological
Disposal Technology for HLW



Tokai Area

Nuclear Safety Research, Nuclear Science and Technology,
Advanced Atomic Energy Science, Neutron Science,
Nuclear Fuel-Cycle and Decommissioning Technology
Development, Radioactive Waste Treatment and Disposal
Technology Development, Human Resource Development, etc.

**Nuclear Science
Research Institute**



**Nuclear Fuel Cycle
Engineering Laboratories**



J-PARC Center



Materials and Life Science using
Neutrons and Muons, Particle
and Nuclear Physics using Kaons
and Neutrinos at Japan Proton
Accelerator Research Complex

Nuclear Emergency Assistance and Training Center (in Hitachinaka City)

R&D on emergency monitoring and
protective measures



Tsuruga Area

Prototype Fast Breeder Reactor MONJU
and FUGEN Decommissioning Engineering Center

MONJU



FUGEN



Nuclear Emergency Assistance and Training Center (in Fukui)

Emergency response training,
Measurement of environmental
radioactivity, etc.



Oarai Research and Development Institute

Research and Test Reactors; JOYO and HTTR,
R&D of FR Cycle System Technology,
Irradiation Test Technology,
High Temperature Gas-cooled Reactor
Technology and its Hydrogen Production Technology

